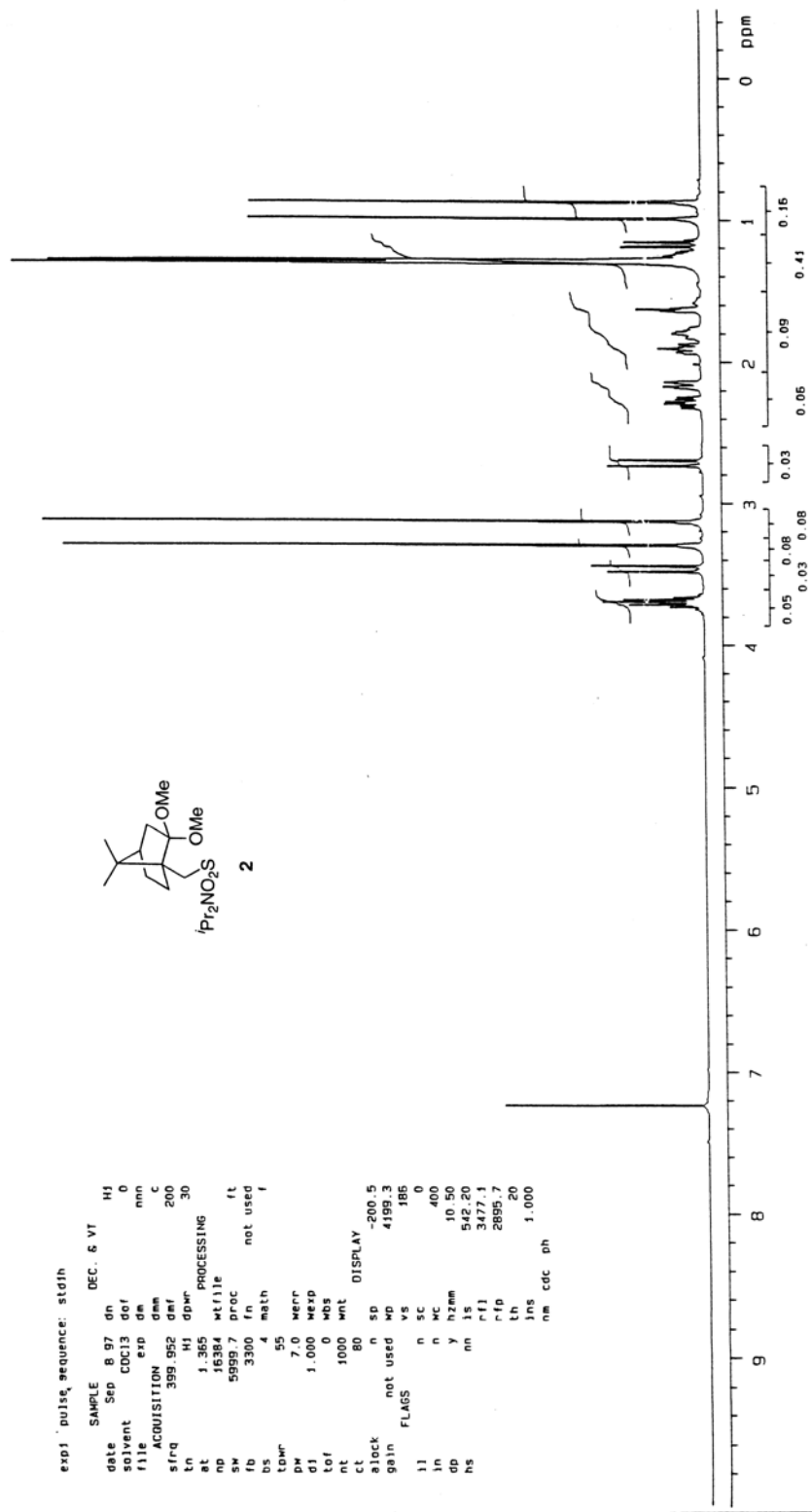
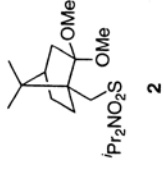


There are 21 ^1H NMR spectra in this file.

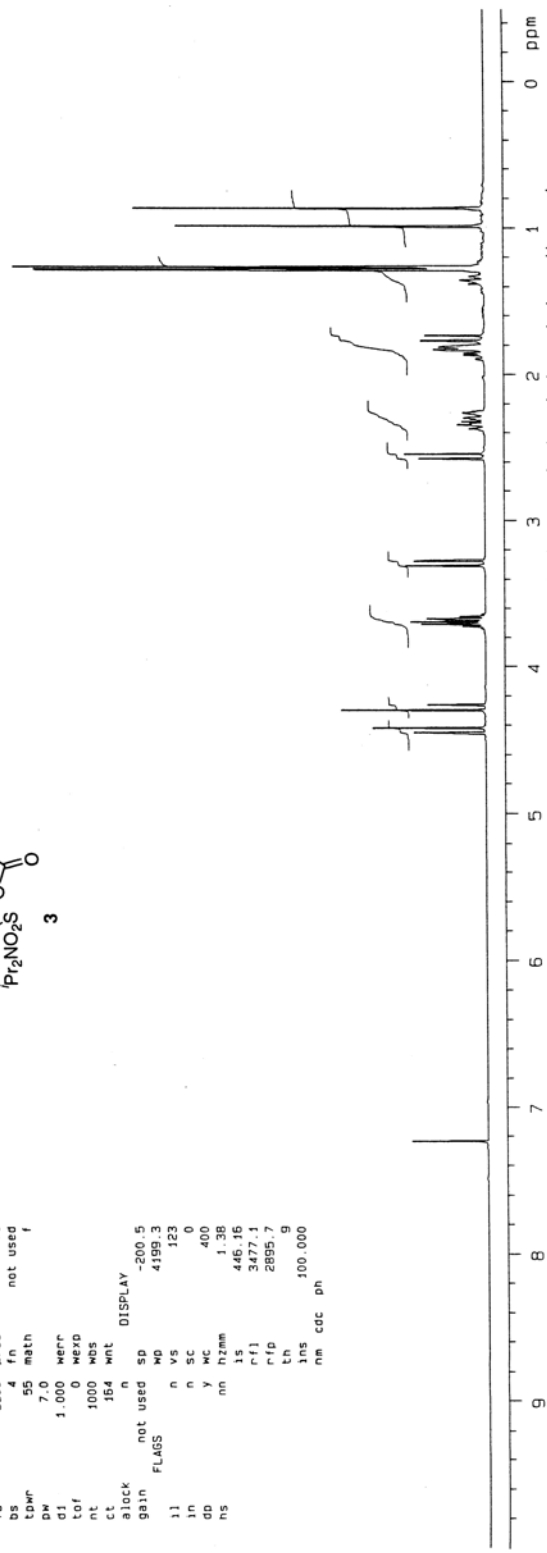
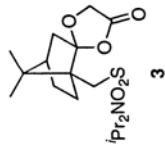
exp1 : pulse sequence: stdinh

SAMPLE DEC. 6 VT H1
date Sep 8.97 dn 0
solvent CDCl3 dof 0
fil CDCl3 exp da min
ACQUISITION exp da c
sfrq 399.952 dar 200
tr H1 dpr 30
rt 1.365 H1 dpr PROCESSING
cp 16384 wfile
sp 5999.7 proc ft
fb 3300 fn not used
bs 4 math
ls 55
lpr 7.0
d1 1.000 Mexp
tof 0 wds
rt 1000 wnt
ct 80
slock n sd -200.5
gain not used wd 4199.3
FLAGS vs 186
lj n sc 0
ln n mc 400
dp y hzmm 10.50
hs nm rls 542.20
rfo 3477.1
ttr 2895.7
lms 20
nm cdc ph 1.000



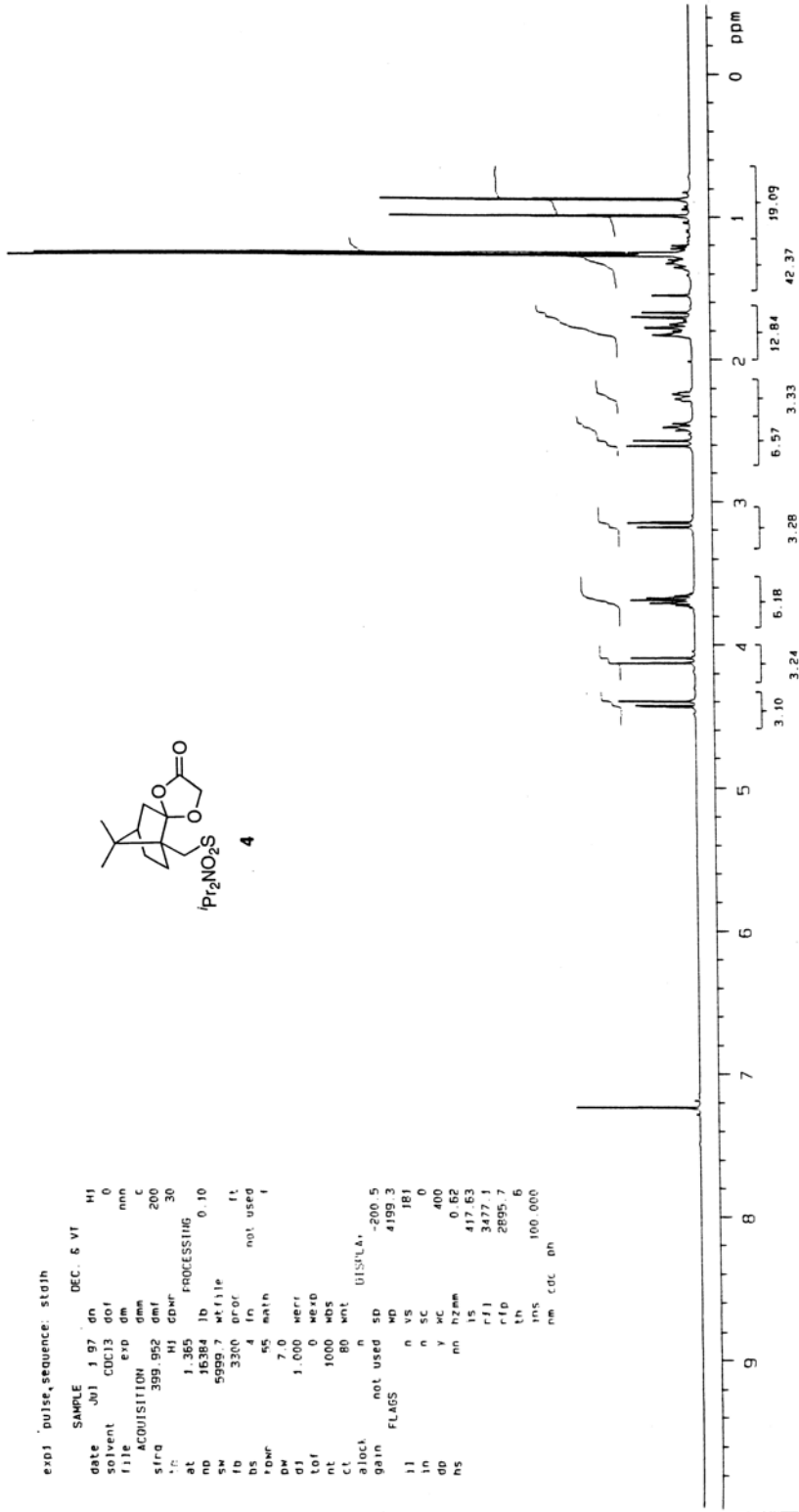
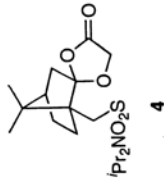
0.872
 0.993
 1.270
 1.273
 1.286
 1.292
 1.561
 1.740
 1.775
 1.812
 1.819
 1.830
 1.836
 2.548
 2.581
 3.279
 3.312
 3.312
 3.676
 3.694
 3.711
 4.264
 4.301
 4.420
 4.454

exp1 pulse sequence: stdsh
 SAMPLE DEC. 8 Y1
 date May 12 99 dn H1
 solvent CDCl3 dof 0
 file exp dm nnn
 ACQUISITION dmm c
 sfrq 399.952 dmf 200
 tn H1 dpmr 30
 at 1.365 PROCESSING
 np 16384 lb
 sw 5999.7 wfile 0.10
 fb 3300 proc ft
 bs 4 fn not used
 tdwr 55 math f
 pw 7.0
 d1 1.000 werr
 tof 0 wexp
 nt 1000 wps
 ct 154 wnt
 alock n DISPLAY
 gain not used sp -200.5
 FLAGS mp 4199.3
 ll n vs 123
 ln n sc 0
 dd y wc 400
 ns nn hzmm 1.38
 ls 446.16
 rfl 3477.1
 rfp 2895.7
 th g
 tns 100.000
 nm cdc ph



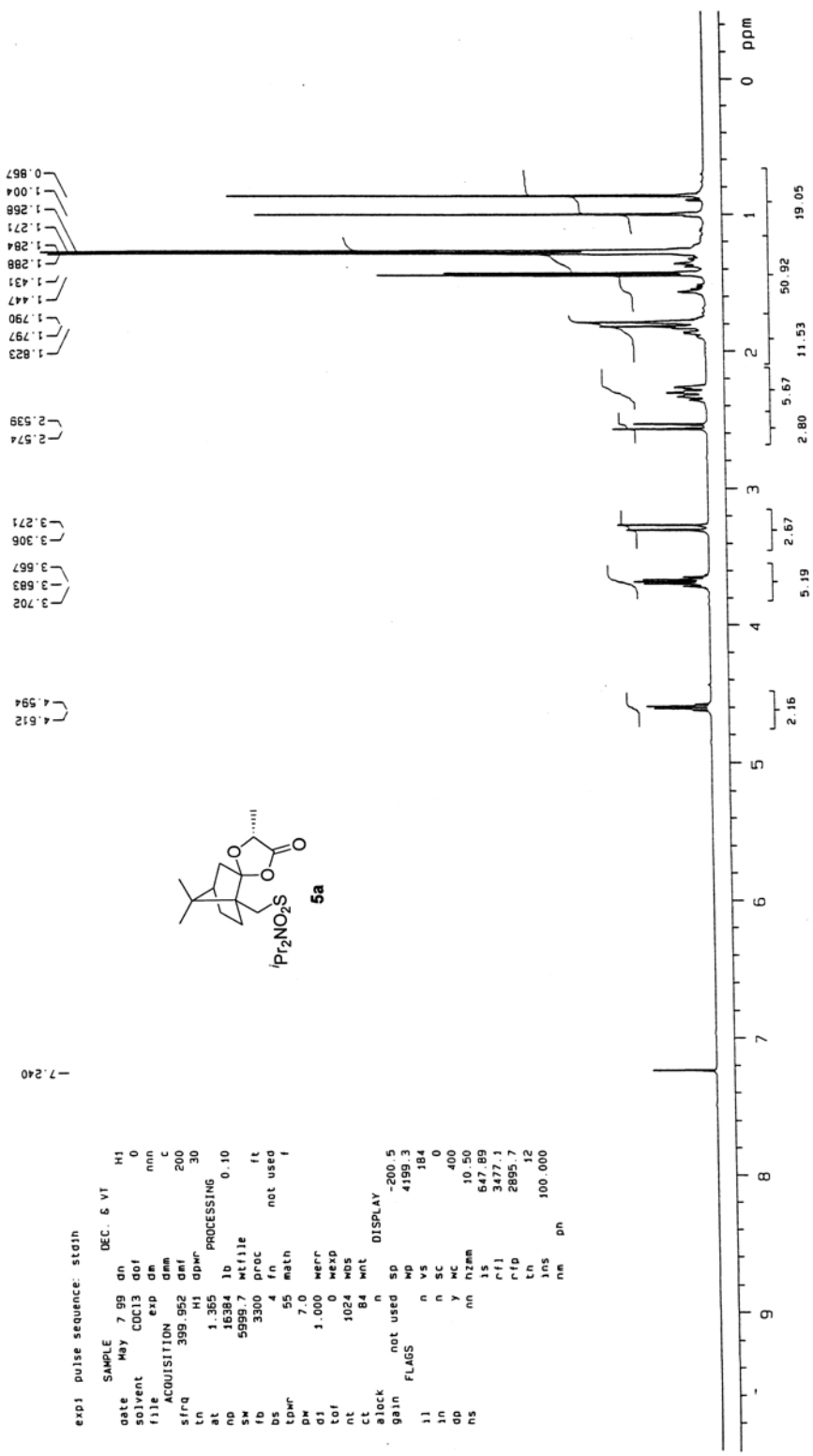
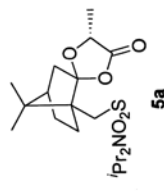
exp1_pulse_sequence: s1d1h

SAMPLE DEC. 6 VT
 date Jul 1 97 dn H1
 solvent CDCl3 dof 0
 file exp dm nnn
 ACQUISITION exp dm c
 s1rg 399.952 dmf 200
 *c H1 CDHF 30
 at 1.365 PROCESSING
 no 16384 fb 0.10
 sw 5999.7 wt file
 fb 3300 error ft
 bs 4 in not used f
 rowr 55 math
 pm 7.0
 d1 1.000 harr
 tot 0 hexo
 nt 1000 hds
 ct 80 wnt
 aloct n BISHUA,
 gain not used sp -200.5
 11 FLAGS NO 4199.3
 1n n vs 181
 1n n SC 0
 1n x PC 400
 ns nm hzame 0.62
 f1 417.63
 f1 3477.1
 f1 2895.7
 1n 6
 1nS 100.000
 nm CDC pH



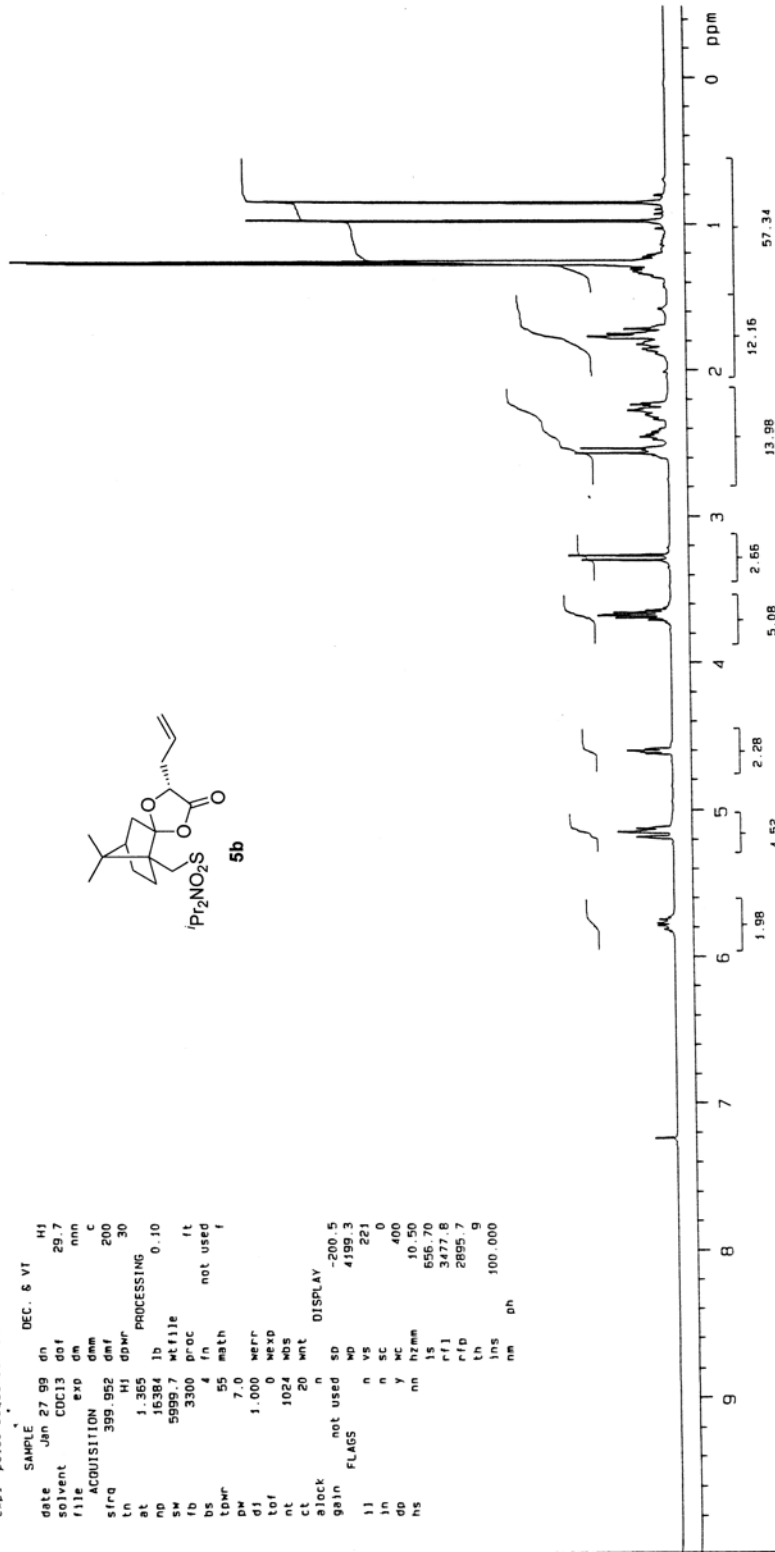
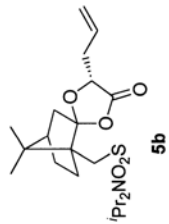
exp1 pulse sequence: steadh

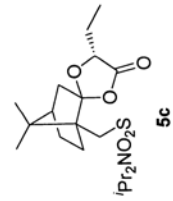
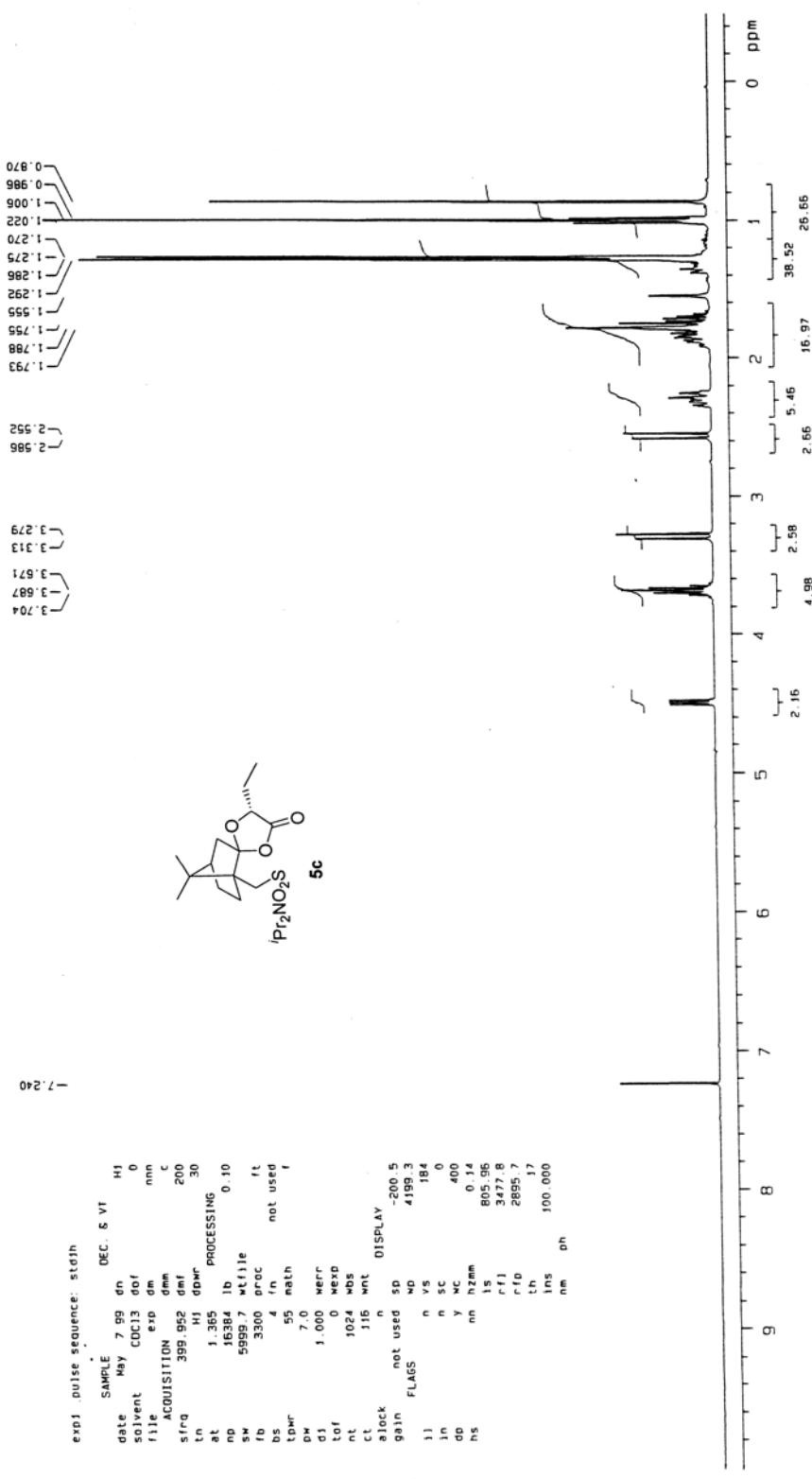
SAMPLE May 7 99 an DEC. 6 VT H1
 solvent COC13 dof 0
 file exp de nnn
 ACQUISITION exp de 3
 sfrq 399.952 def 200
 tn H1 dpmc 30
 at 1.355 lb PROCESSING 0.10
 np 16397 Mcfile
 sw 59991.7 Mcfile
 fb 3300 proc ft
 bs n not used
 cpwr 55 math l
 pw 7.0
 dj 1.000 werr
 col 0 wexp
 nt 1024 nbs
 ct 84 mlr
 gain not used sp
 block n DISPLAY
 gain -200.5
 mp 4199.3
 ll n vs 784
 0
 ln n SC 400
 dp y MC 10.50
 ns nn r1zmm 547.85
 15 3477.1
 r1f 2895.7
 tn 12
 ins 100.000
 nm ph



exp1 pulse sequence: stdsh

SAMPLE DEC. 6 VI
date Jan 27 99 dn H1
solvent CDCl3 dof 29.7
file exp0 dm nnn
ACQUISITION exp0 dm c
sfrq 399.952 dmf 200
ln H1 dpr 30
ac 1.365 PROCESSING
nb 16384 lb 0.10
sw 5999.7 wt file
fo 3300 proc ft
ds 4 ln not used
tpr 55 math f
pw 7.0
d1 1.000 wecr
tcf HEAD
nt 1024 rds
ct 20 wnt
BLOCK n DISPLAY
gain not used 50 -200.5
pp n 4199.3
ll n vs 221
ln y SC 400
dd y Hzmm 10.50
hs nm 656.70
f1 3477.8
c1d 2895.7
ln 9
lms 100.000
nm dh





exp1_pulse sequence: st01h
 -7.240

SAMPLE DEC. 6 VT
 date May 7 99 dn H1
 solvent CDCl3 dof 0
 file exp dm nnn
 ACQUISITION exp dm c
 s/rq 399.952 df 200
 tn H1 dbr 30
 al 1.365 PROCESSING
 nd 16384 lb 0.10
 sw 5999.7 wt file
 fb 3300 proc ft
 bs 4 fn not used
 tbr 55 math
 pw 7.0
 d1 1.000 werr
 tof 1024 wexp
 nt 116 wnt
 ct 116 wnt DISPLAY
 alock not used 5D -200.5
 gain not used 4199.3
 FLMS n 15 184
 l1 n 15 0
 l2 n 3C 400
 dd y MC 0.14
 hs nm 12mm
 l3 805.96
 r1j 3477.8
 r10 2895.7
 tn 100.000
 lms
 nm dh

7.278
7.262
7.242
7.235
7.220
7.214

3.689
3.671
3.654
3.271
3.237
3.101
3.097
3.090
3.085

2.537
2.502

1.542
1.275
1.174
0.914
0.812

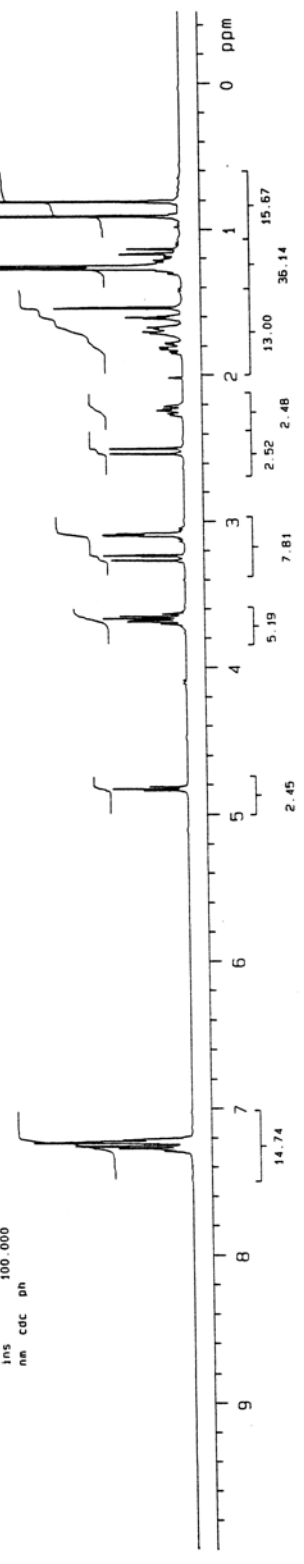
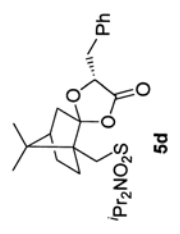
4.830

14.74

exp1_pulse sequence: st01h

```

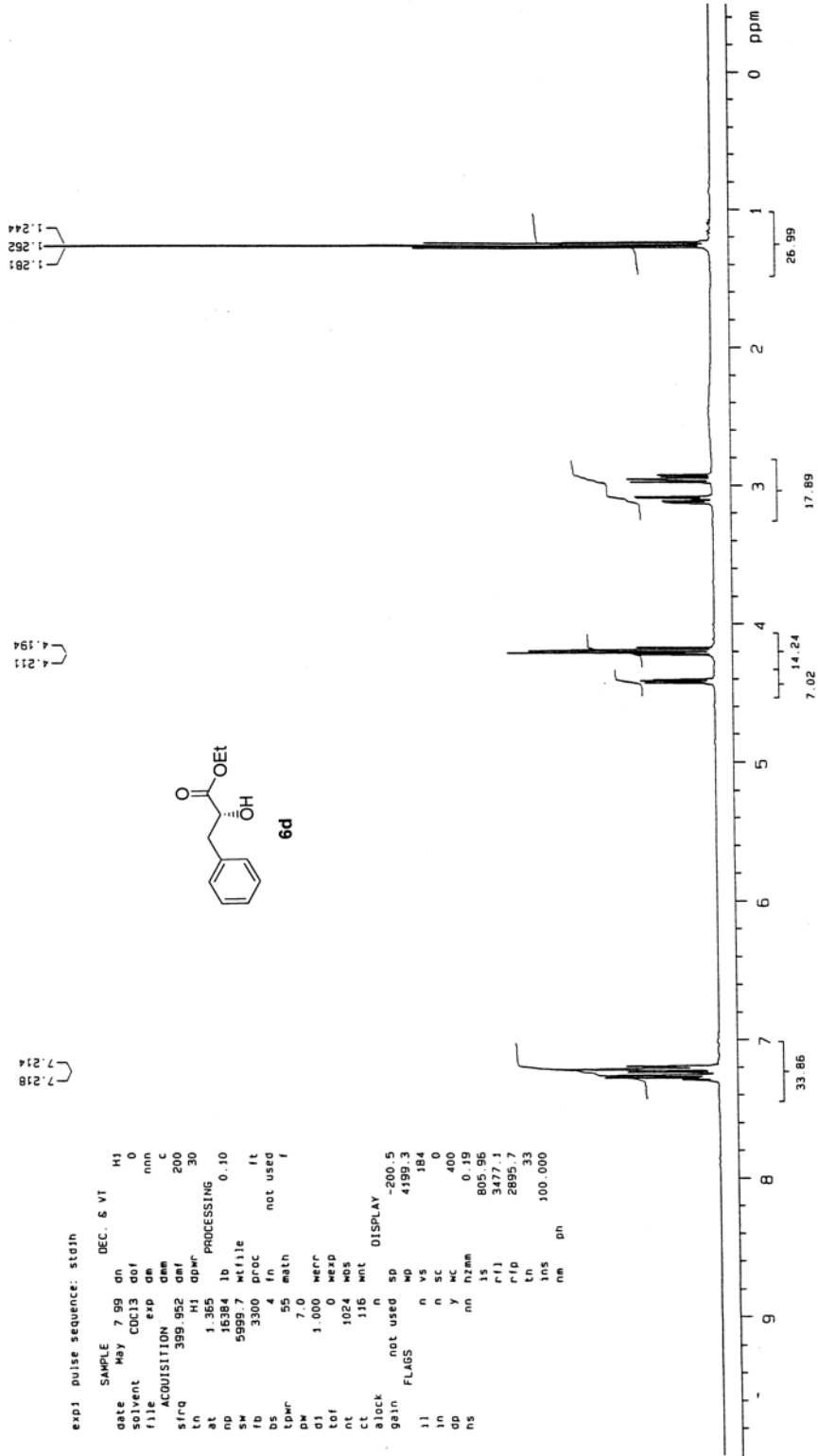
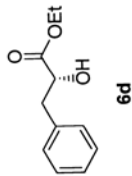
SAMPLE DEC. & VT
date Apr 22 99 on HI
solvent CDCl3 dof -1248.5
file exp om nnn
ACQUISITION dmh c
sfrq 395.952 dmf 200
tn HI dpmr 30
at 1.365 PROCESSING 0.10
np 16384 lb
sw 5995.7 Mfile
fb 3300 proc fc
bs 4 fn not used
tdmr 55 math f
pw 7.0
d1 1.000 MERR
nt 1000 MDS
ct 64 Mnt
alock n
gain not used SP -200.5
          MD 4199.3
          n VS 188
          n SC 0
          y MC 400
          hzmm 0.59
          rf1 420.92
          rfp 3477.1
          lh 2895.7
          lns 15
          nm edc ph 100.000
  
```




```

exp1 pulse sequence: stdf1h
SAMPLE 7.99 dn H1
date May 0
solvent CDCl3 dof 0
file name nmc
ACQUISITION exp da 200
sfrq 399.952 dnm 200
Ln H1 dpwr 30
at 1.385 PROCESSING 0.10
np 16384 lb
sw 5999.7 Mcfile
fb 3300 proc ft
bs 4 fn not used
tprc 55 math l
pw 7.0
d1 1.000 werr
tof 0 wexp
nt 1024 wos
ct 116 wnt
alock n DISPLAY
gain not used sp -200.5
mp 4199.13
FLAGS n vs 184
ln n sc 0
op y mc 400
hs nn hzmm 0.19
ls 805.96
r1j 3477.1
r1d 2895.7
Ln 33
ins 100.000
nm dn

```



0.998
1.021
1.273
1.290
1.315
1.521
1.537
1.568
1.693
1.726
1.826
1.936
1.945
2.152
2.541
2.575

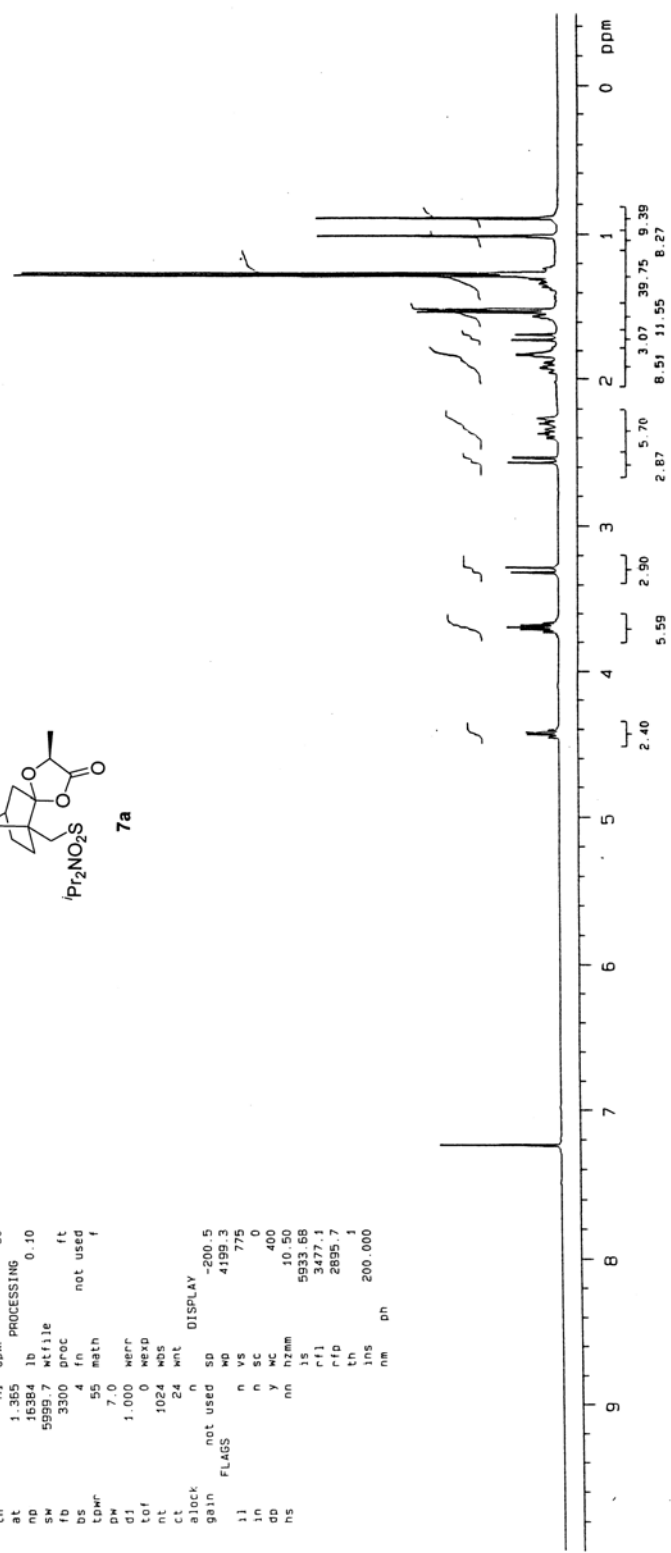
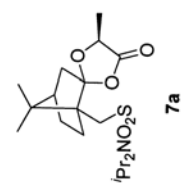
3.284
3.317
3.580
3.696
3.713

4.421
4.440

-7.242

```

exp1 pulse sequence: stdsh
SAMPLE May 16 99 dn DEC. & VT H1
solvent CCl3 dcl 0
file Exp dm min
ACQUISITION Exp dm min
sfrq 399.952 dm 200
tn 11 gdmw 30
at 1.365 1b PROCESSING 0.10
nd 16364 1b
sw 5959.7 kfile
fs 3500 proc ft
ds 4 rn not used
tdmr 55 math f
pw 7.0
dj 1.000 merr
nt 1024 wos
ct 24 wnt
gain not used 50
alock n DISPLAY
flags wd -200.5
n vs 4199.5
n sc 775
y wc 400
n1zemm 10 90
rfl 5933.86
rfp 3477.1
tms 2695.7
nm 1
pns 200.000
dm
  
```

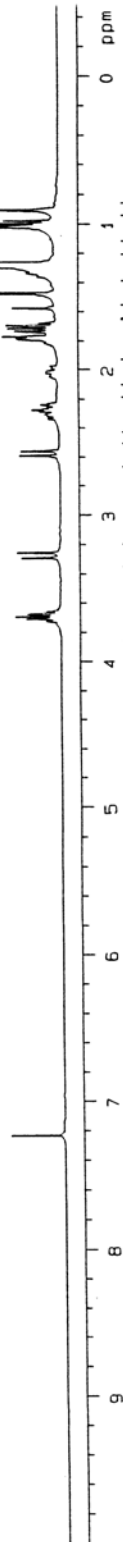
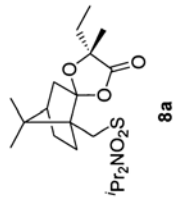


0.907
0.982
1.002
1.022
1.271
1.288
1.326
1.339
1.478
1.579
1.700
1.718
1.742
1.775
1.784
2.279
2.564
2.597
3.260
3.293
3.678
3.694
3.711

- 7.240

exp1 pulse sequence: std1h

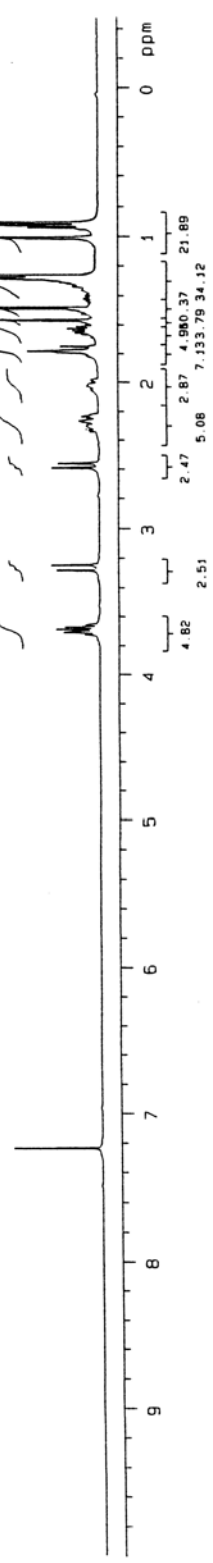
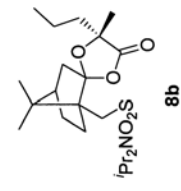
SAMPLE DEC. & VT
 date Apr 29 99 dn H1
 solvent CDC13 dof 0
 file CDC13 dm nnn
 exp dm nnn
 ACQUISITION exp dm c
 sfrq 399.952 dmf 200
 tn H1 ddw 30
 at 1.365 PROCESSING
 nd 16384 lb 0.10
 sw 5999.7 wfile
 fb 3300 proc ft
 bs 4 'n not used
 tpwr 55 math
 DM 7.0
 d1 1.000 NERR
 tof 0 MEXD
 nt 1000 NDS
 ct 32 wnt
 alock n DISPLAY
 gain not used 50 -200.5
 l1 FLAGS MD 4199.3
 n vs 4081
 n sc 0
 y mc 400
 ns nn hzmm 10.50
 ls 9190.98
 rfl 3477.8
 rfd 2895.7
 th 36
 ins 100.000
 nm cdc ph



0 ppm
 1
 2 2.85 2.11 3.13 6.92
 13.48 9.16 16.44
 2.57 5.70
 3 2.57
 4 5.06
 5
 6
 7
 8
 9

7.240
 3.709
 3.693
 3.674
 3.284
 3.249
 2.597
 1.798
 1.795
 1.647
 1.630
 1.574
 1.489
 1.341
 1.328
 1.312
 1.286
 1.013
 0.947
 0.929
 0.909

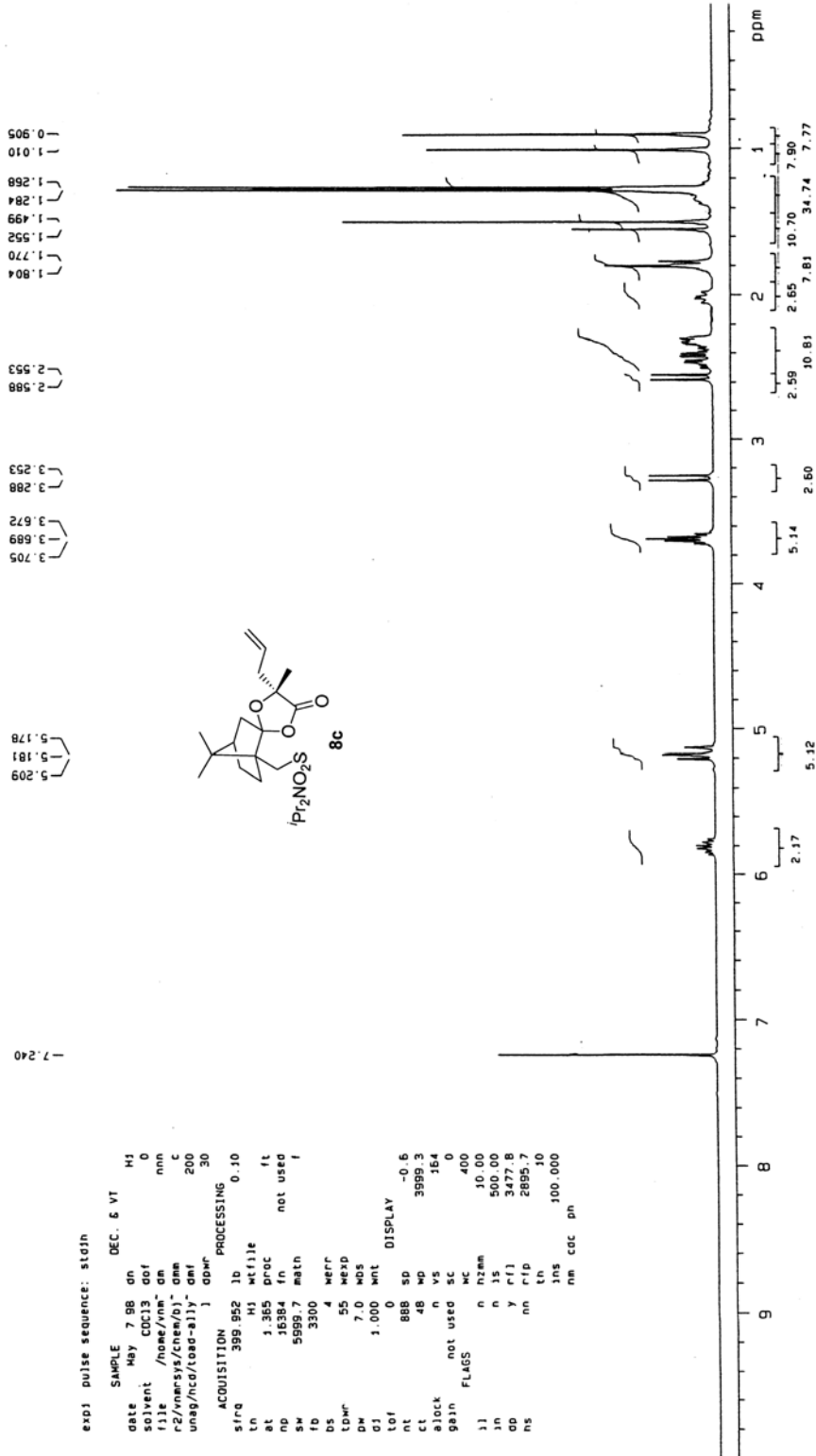
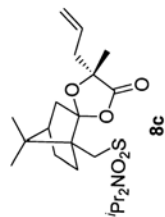
exp1 pulse sequence: stdjh
 SAMPLE DEC. & VT
 date Sep 25 98 dn H1
 solvent CDC13 dof 0
 file exp dm nnn
 ACQUISITION exp dm c
 sfrq 399.952 dmf 200
 tn H1 gdwr 30
 at 1.365 PROCESSING
 no 16384 lb 0.10
 sw 5999.7 wtfile
 fb 3300 proc ft
 bs 4 fn not used
 towr 55 math
 pw 7.0
 d1 1.000 werr
 tof 0 hexp
 nt 1024 wds
 ct 32 wnt
 alock n DISPLAY
 gain not used SD -0.6
 ll FLAGS MD 3999.3
 ln n vs 150
 ln n SC 0
 do y MC 400
 hs no hzmm 10.00
 rfl 237.66
 rfd 3477.8
 rth 2895.7
 lth 11
 lns 100.000
 nm ph



expj pulse sequence: stdjrh

SAMPLE DEC. & VT
date May 7 98 dn HJ
solvent COCl3 dof 0
file /home/vnm dn
r2/vnmrSYS/chem/bj' dnm c
unag/hcd/loop-ally dmi 200
1 dpmr 30
ACQUISITION PROCESSING
s/rq 399.952 lb 0.10
tn HJ wfile
at 1.385 proc ft
np 16384 fn not used
sw 5999.7 math 1
fb 3300
bs 4 werr
tDmr 55 wexp
Dw 7.0 wds
G1 1.000 wnt
Lo1 0 DISPLAY
nt 888 sp -0.6
ct 48 wp 3999.3
alock n vs 164
gain not used sc 0
FLAGS MC 400
l1 n hzmm 10.00
in n 15 500.00
pd y r1j 3477.8
ns nn r1p 2895.7
tn 10
ins 100.000
nm coc ph

5.209
5.181
5.178
3.705
3.699
3.672
3.298
3.253
2.588
2.553
1.904
1.770
1.552
1.499
1.284
1.268
1.010
0.905

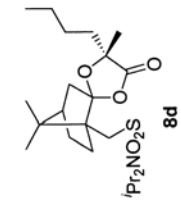


3.712
3.694
3.677
3.287
3.252
2.599
2.565
1.788
1.754
1.564
1.548
1.551
1.492
1.389
1.361
1.343
1.325
1.309
1.289
1.272
1.020
0.929
0.912
0.881

exp1 pulse sequence: st01h

```

SAMPLE          DEC. 6 VT
date            May 7 98 an H1
solvent         CDC13 dof 0
file            exp an nnn
ACQUISITION    dm c
sfrq           399.952 dmf 200
tn             H1 dpmr 30
at             3.744 PROCESSING
nd             44928 wfile
sw             5999.7 proc ft
fb             3300 fn not used
bs             4 math f
tdmr          55
DM             7.0 MERR
G1             0 MEXD
LOf           0 MDS
nt            1000 wnt
CL            64 DISPLAY
a1ock         n SD -200.1
gain          not used MD 4199.4
FLAGS        vs 157
j1            n SC 0
j2            n MC 400
j3            y Hzmm 10.00
ns           nn 35 379.42
              r1j 3477.3
              r1o 2895.7
              tn 76
nm            1ms 1.000
nm cdc ph
  
```



8d

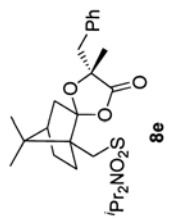
17.240



0.04
0.02
0.05
0.02
0.04
0.08
0.09
0.14

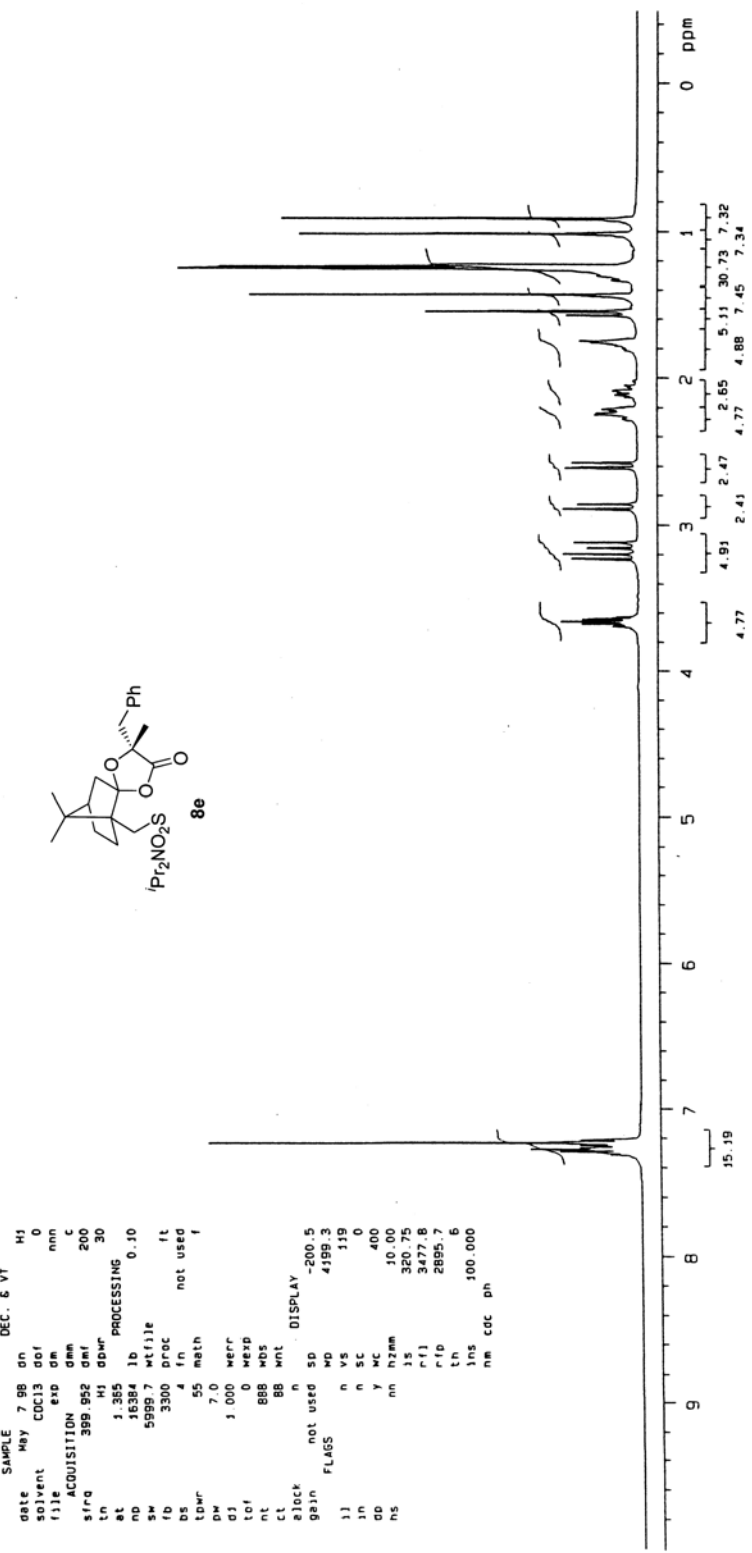

```

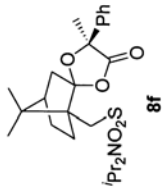
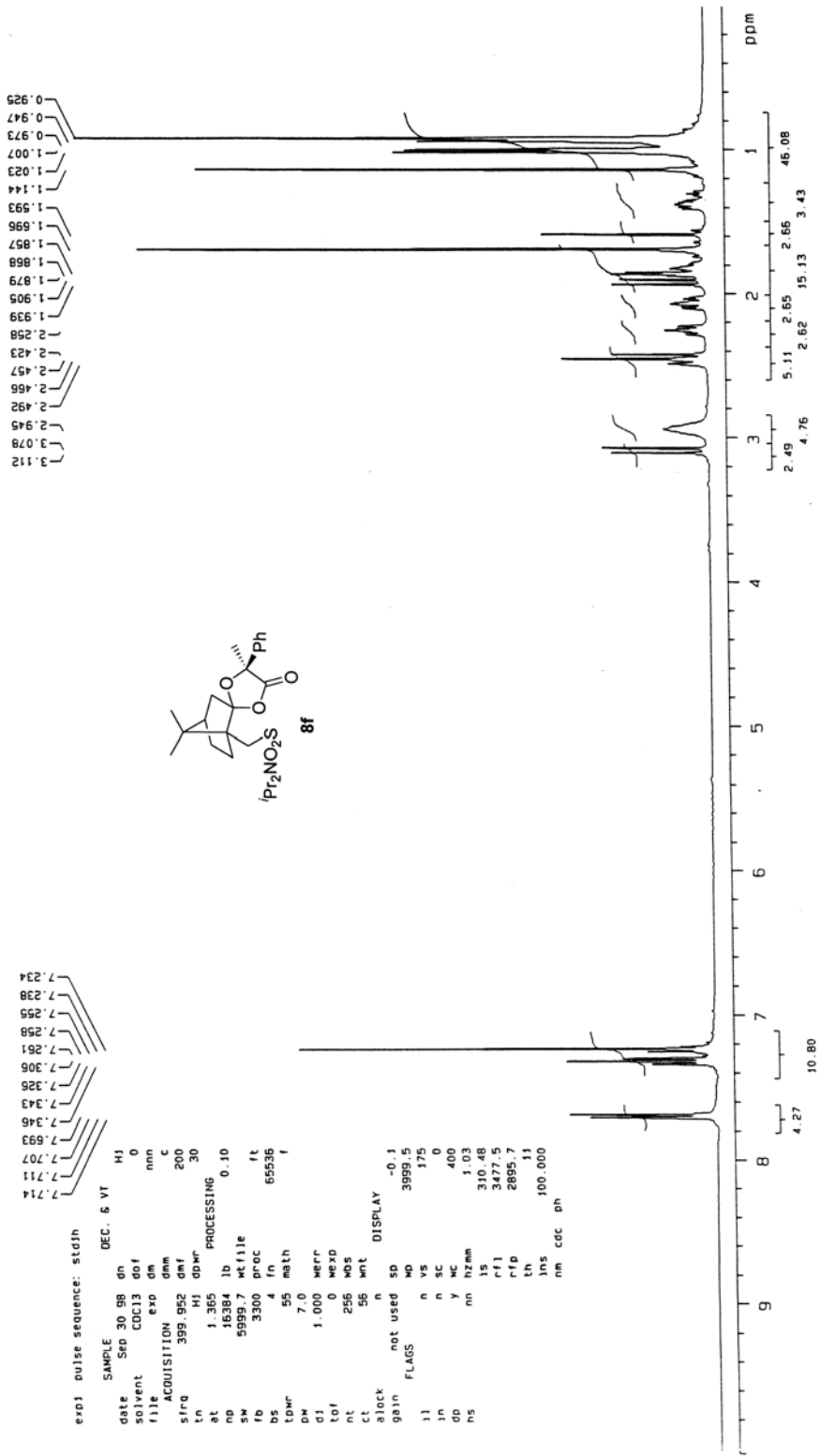
exp1 pulse sequence: stdsh
SAMPLE          DEC. & VT
date            May 7 98   an
solvent         CDCl3     dof
file            399_952   exp
ACQUISITION    399_952   dem
prog            H1       dnr
pc              1.355    PROCESSING
pd              16384    lb
pw              5999.7   wf:file
pb              3300     proc
bs              4       fn
tdwr            55      math
dwr             7.0
d1              1.000    warr
d2              0       maxp
tcf            888      wbs
t1             88       wtl
t2             88       wtl
clock           n       not used
gain            n       not used
FLAHS          n       not used
  wd           4599.3
  vs           119
  sc           0
  y           400
  mc           10.00
  r2mm        320.75
  r1          3477.8
  r1p         2895.2
  t1n         6
  t1s         100.000
nm            cdc     ph
  
```

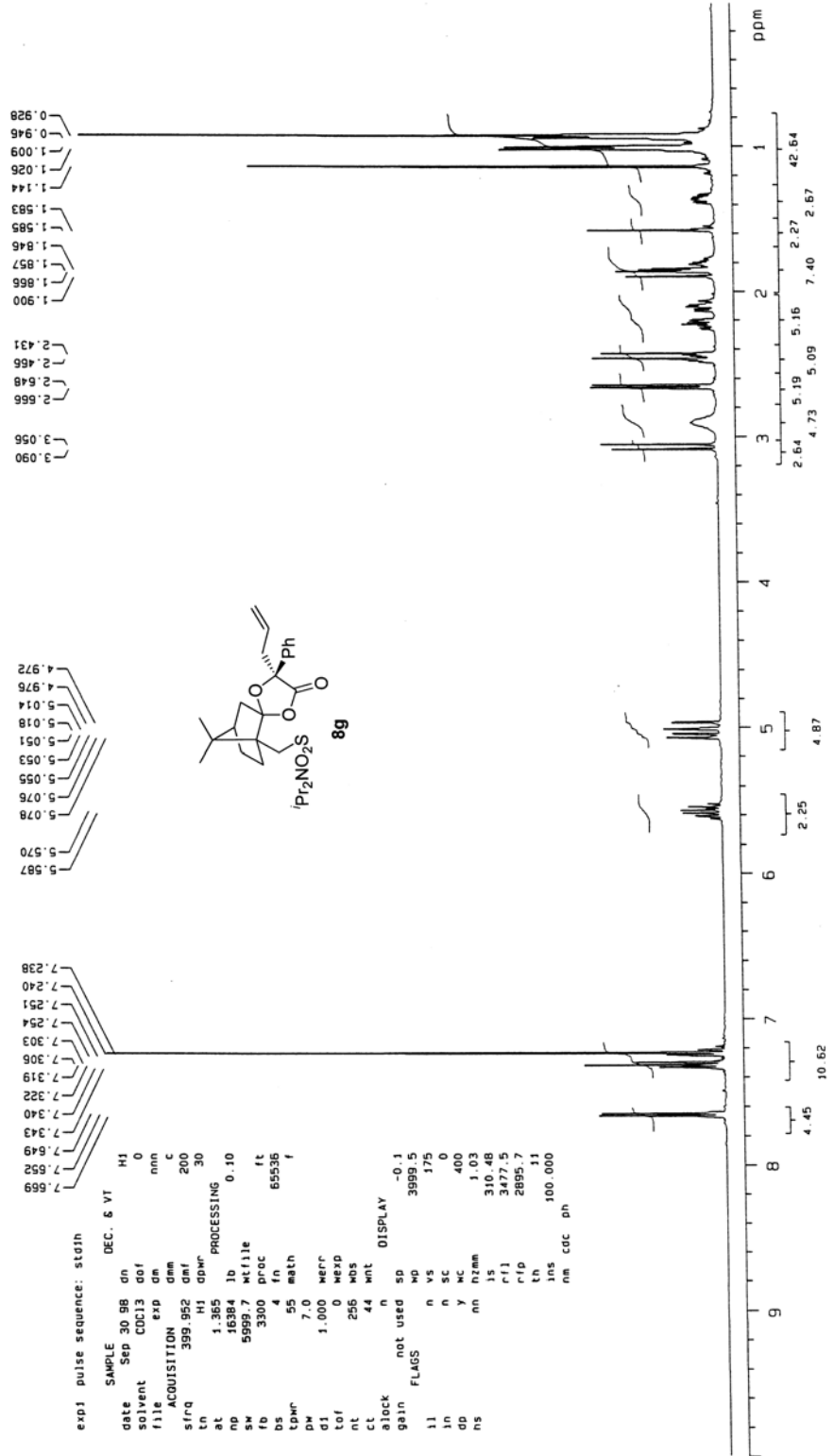


7.317
7.300
7.282
7.273
7.264
7.256
7.240
7.233
7.218

2.229
2.220
2.213
1.779
1.768
1.757
1.593
1.546
1.442
1.341
1.326
1.317
1.310
1.304
1.297
1.286







```

exp1 pulse sequence: stdjh
SAMPLE          DEC. & VT
date    Sep 30 98  dn
solvent CDCl3  dof  0
file    exp    dm  nnn
ACQUISITION  dnm  c
sfrq    399.952 dmf  200
tn       H1     dpr  30
          H1     dpr  30
at       1.365  PROCESSING
          16384  lb      0.10
          5999.7  wfile
          3300  prec   ft
          4     fn    65536
          55    math  f
          7.0   D1
          1.000 werr
          0     wexp
          255   wds
          44   wnt
          n     DISPLAY
gain    not used  sp  -0.1
          wo     39999.5
          n     vs  175
          n     sc  0
          y     hc  400
          nn    hzmm 1.03
          ls    ls   310.48
          r1    r1   3477.5
          r10   r10  2895.7
          th    th   11
          lns   lns  100.000
nm      cdc  ph
  
```

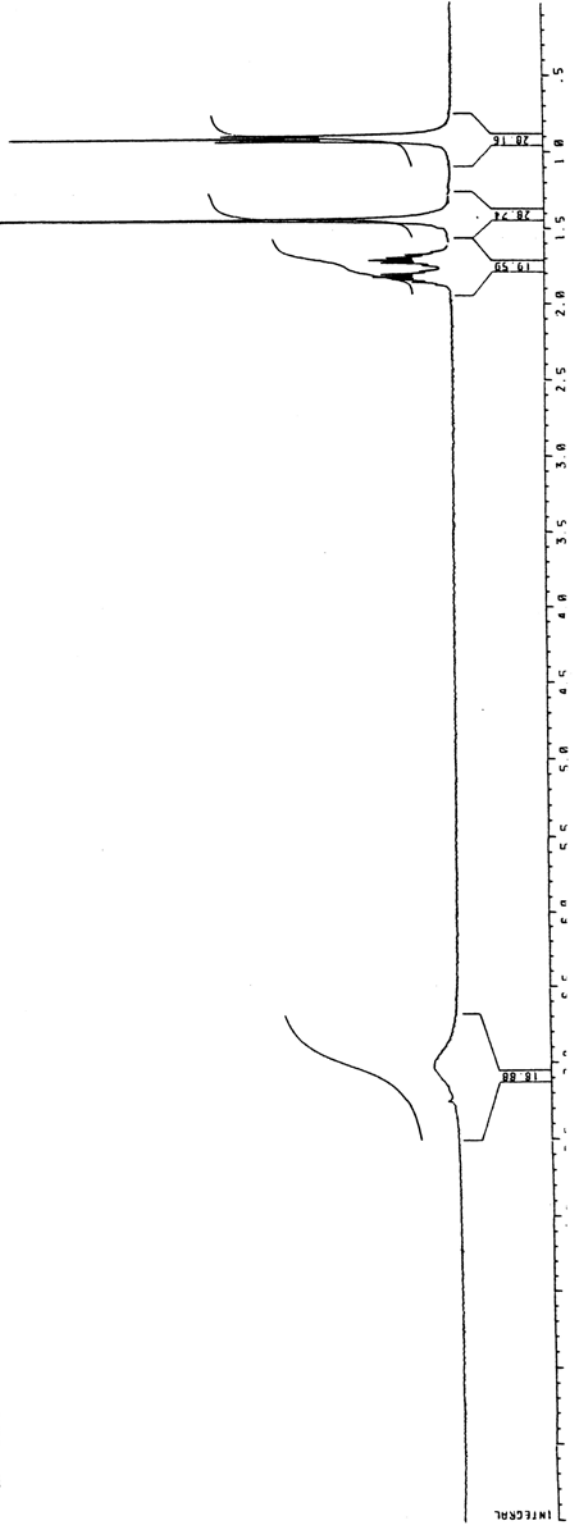
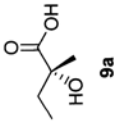
1.56
1.57
1.58
1.59
1.60
1.61
1.62
1.63
1.64
1.65
1.66
1.67
1.68
1.69
1.70
1.71
1.72
1.73
1.74
1.75
1.76
1.77
1.78
1.79
1.80
1.81
1.82
1.83
1.84
1.85
1.86
1.87
1.88
1.89
1.90
1.91
1.92
1.93
1.94
1.95
1.96
1.97
1.98
1.99
2.00
2.01
2.02
2.03
2.04
2.05
2.06
2.07
2.08
2.09
2.10
2.11
2.12
2.13
2.14
2.15
2.16
2.17
2.18
2.19
2.20
2.21
2.22
2.23
2.24
2.25
2.26
2.27
2.28
2.29
2.30
2.31
2.32
2.33
2.34
2.35
2.36
2.37
2.38
2.39
2.40
2.41
2.42
2.43
2.44
2.45
2.46
2.47
2.48
2.49
2.50
2.51
2.52
2.53
2.54
2.55
2.56
2.57
2.58
2.59
2.60
2.61
2.62
2.63
2.64
2.65
2.66
2.67
2.68
2.69
2.70
2.71
2.72
2.73
2.74
2.75
2.76
2.77
2.78
2.79
2.80
2.81
2.82
2.83
2.84
2.85
2.86
2.87
2.88
2.89
2.90
2.91
2.92
2.93
2.94
2.95
2.96
2.97
2.98
2.99
3.00
3.01
3.02
3.03
3.04
3.05
3.06
3.07
3.08
3.09
3.10
3.11
3.12
3.13
3.14
3.15
3.16
3.17
3.18
3.19
3.20
3.21
3.22
3.23
3.24
3.25
3.26
3.27
3.28
3.29
3.30
3.31
3.32
3.33
3.34
3.35
3.36
3.37
3.38
3.39
3.40
3.41
3.42
3.43
3.44
3.45
3.46
3.47
3.48
3.49
3.50
3.51
3.52
3.53
3.54
3.55
3.56
3.57
3.58
3.59
3.60
3.61
3.62
3.63
3.64
3.65
3.66
3.67
3.68
3.69
3.70
3.71
3.72
3.73
3.74
3.75
3.76
3.77
3.78
3.79
3.80
3.81
3.82
3.83
3.84
3.85
3.86
3.87
3.88
3.89
3.90
3.91
3.92
3.93
3.94
3.95
3.96
3.97
3.98
3.99
4.00
4.01
4.02
4.03
4.04
4.05
4.06
4.07
4.08
4.09
4.10
4.11
4.12
4.13
4.14
4.15
4.16
4.17
4.18
4.19
4.20
4.21
4.22
4.23
4.24
4.25
4.26
4.27
4.28
4.29
4.30
4.31
4.32
4.33
4.34
4.35
4.36
4.37
4.38
4.39
4.40
4.41
4.42
4.43
4.44
4.45
4.46
4.47
4.48
4.49
4.50
4.51
4.52
4.53
4.54
4.55
4.56
4.57
4.58
4.59
4.60
4.61
4.62
4.63
4.64
4.65
4.66
4.67
4.68
4.69
4.70
4.71
4.72
4.73
4.74
4.75
4.76
4.77
4.78
4.79
4.80
4.81
4.82
4.83
4.84
4.85
4.86
4.87
4.88
4.89
4.90
4.91
4.92
4.93
4.94
4.95
4.96
4.97
4.98
4.99
5.00
5.01
5.02
5.03
5.04
5.05
5.06
5.07
5.08
5.09
5.10
5.11
5.12
5.13
5.14
5.15
5.16
5.17
5.18
5.19
5.20
5.21
5.22
5.23
5.24
5.25
5.26
5.27
5.28
5.29
5.30
5.31
5.32
5.33
5.34
5.35
5.36
5.37
5.38
5.39
5.40
5.41
5.42
5.43
5.44
5.45
5.46
5.47
5.48
5.49
5.50
5.51
5.52
5.53
5.54
5.55
5.56
5.57
5.58
5.59
5.60
5.61
5.62
5.63
5.64
5.65
5.66
5.67
5.68
5.69
5.70
5.71
5.72
5.73
5.74
5.75
5.76
5.77
5.78
5.79
5.80
5.81
5.82
5.83
5.84
5.85
5.86
5.87
5.88
5.89
5.90
5.91
5.92
5.93
5.94
5.95
5.96
5.97
5.98
5.99
6.00
6.01
6.02
6.03
6.04
6.05
6.06
6.07
6.08
6.09
6.10
6.11
6.12
6.13
6.14
6.15
6.16
6.17
6.18
6.19
6.20
6.21
6.22
6.23
6.24
6.25
6.26
6.27
6.28
6.29
6.30
6.31
6.32
6.33
6.34
6.35
6.36
6.37
6.38
6.39
6.40
6.41
6.42
6.43
6.44
6.45
6.46
6.47
6.48
6.49
6.50
6.51
6.52
6.53
6.54
6.55
6.56
6.57
6.58
6.59
6.60
6.61
6.62
6.63
6.64
6.65
6.66
6.67
6.68
6.69
6.70
6.71
6.72
6.73
6.74
6.75
6.76
6.77
6.78
6.79
6.80
6.81
6.82
6.83
6.84
6.85
6.86
6.87
6.88
6.89
6.90
6.91
6.92
6.93
6.94
6.95
6.96
6.97
6.98
6.99
7.00
7.01
7.02
7.03
7.04
7.05
7.06
7.07
7.08
7.09
7.10
7.11
7.12
7.13
7.14
7.15
7.16
7.17
7.18
7.19
7.20
7.21
7.22
7.23
7.24
7.25
7.26
7.27
7.28
7.29
7.30
7.31
7.32
7.33
7.34
7.35
7.36
7.37
7.38
7.39
7.40
7.41
7.42
7.43
7.44
7.45
7.46
7.47
7.48
7.49
7.50
7.51
7.52
7.53
7.54
7.55
7.56
7.57
7.58
7.59
7.60
7.61
7.62
7.63
7.64
7.65
7.66
7.67
7.68
7.69
7.70
7.71
7.72
7.73
7.74
7.75
7.76
7.77
7.78
7.79
7.80
7.81
7.82
7.83
7.84
7.85
7.86
7.87
7.88
7.89
7.90
7.91
7.92
7.93
7.94
7.95
7.96
7.97
7.98
7.99
8.00
8.01
8.02
8.03
8.04
8.05
8.06
8.07
8.08
8.09
8.10
8.11
8.12
8.13
8.14
8.15
8.16
8.17
8.18
8.19
8.20
8.21
8.22
8.23
8.24
8.25
8.26
8.27
8.28
8.29
8.30
8.31
8.32
8.33
8.34
8.35
8.36
8.37
8.38
8.39
8.40
8.41
8.42
8.43
8.44
8.45
8.46
8.47
8.48
8.49
8.50
8.51
8.52
8.53
8.54
8.55
8.56
8.57
8.58
8.59
8.60
8.61
8.62
8.63
8.64
8.65
8.66
8.67
8.68
8.69
8.70
8.71
8.72
8.73
8.74
8.75
8.76
8.77
8.78
8.79
8.80
8.81
8.82
8.83
8.84
8.85
8.86
8.87
8.88
8.89
8.90
8.91
8.92
8.93
8.94
8.95
8.96
8.97
8.98
8.99
9.00
9.01
9.02
9.03
9.04
9.05
9.06
9.07
9.08
9.09
9.10
9.11
9.12
9.13
9.14
9.15
9.16
9.17
9.18
9.19
9.20
9.21
9.22
9.23
9.24
9.25
9.26
9.27
9.28
9.29
9.30
9.31
9.32
9.33
9.34
9.35
9.36
9.37
9.38
9.39
9.40
9.41
9.42
9.43
9.44
9.45
9.46
9.47
9.48
9.49
9.50
9.51
9.52
9.53
9.54
9.55
9.56
9.57
9.58
9.59
9.60
9.61
9.62
9.63
9.64
9.65
9.66
9.67
9.68
9.69
9.70
9.71
9.72
9.73
9.74
9.75
9.76
9.77
9.78
9.79
9.80
9.81
9.82
9.83
9.84
9.85
9.86
9.87
9.88
9.89
9.90
9.91
9.92
9.93
9.94
9.95
9.96
9.97
9.98
9.99
10.00

2.821

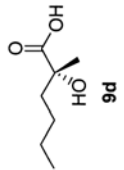
BRUKER

PM

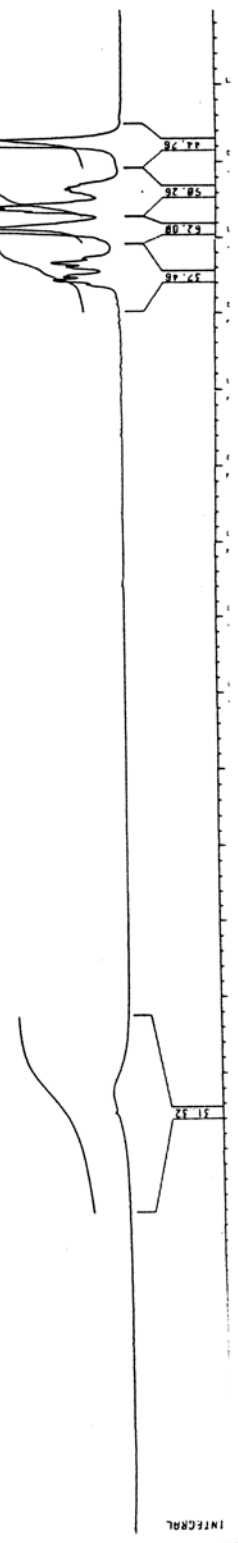
USER: 1202.002
DATE: 20-3-00
SF 400.136
SI 135.0
OI 16894.074
S1 16384
TD 16384
SQ 6410.256
MZ/PT 7.78
PW 5.0
RD 1.000
AQ 1.228
RG 16
MS 23
TE 233
FW 8100.000
OZ 4000.000
OP 10L PD
LB 0.0
GB 0.0
CB 40.00
CY 0.0
F1 9.500P
F2 --.500P
PPI/CH 100.043
SN 8373.60



1.98
 1.97
 1.96
 1.95
 1.94
 1.93
 1.92
 1.91
 1.90
 1.89
 1.88
 1.87
 1.86
 1.85
 1.84
 1.83
 1.82
 1.81
 1.80
 1.79
 1.78
 1.77
 1.76
 1.75
 1.74
 1.73
 1.72
 1.71
 1.70
 1.69
 1.68
 1.67
 1.66
 1.65
 1.64
 1.63
 1.62
 1.61
 1.60
 1.59
 1.58
 1.57
 1.56
 1.55
 1.54
 1.53
 1.52
 1.51
 1.50
 1.49
 1.48
 1.47
 1.46
 1.45
 1.44
 1.43
 1.42
 1.41
 1.40
 1.39
 1.38
 1.37
 1.36
 1.35
 1.34
 1.33
 1.32
 1.31
 1.30
 1.29
 1.28
 1.27
 1.26
 1.25
 1.24
 1.23
 1.22
 1.21
 1.20
 1.19
 1.18
 1.17
 1.16
 1.15
 1.14
 1.13
 1.12
 1.11
 1.10
 1.09
 1.08
 1.07
 1.06
 1.05
 1.04
 1.03
 1.02
 1.01
 1.00
 0.99
 0.98
 0.97
 0.96
 0.95
 0.94
 0.93
 0.92
 0.91
 0.90
 0.89
 0.88
 0.87
 0.86
 0.85
 0.84
 0.83
 0.82
 0.81
 0.80
 0.79
 0.78
 0.77
 0.76
 0.75
 0.74
 0.73
 0.72
 0.71
 0.70
 0.69
 0.68
 0.67
 0.66
 0.65
 0.64
 0.63
 0.62
 0.61
 0.60
 0.59
 0.58
 0.57
 0.56
 0.55
 0.54
 0.53
 0.52
 0.51
 0.50
 0.49
 0.48
 0.47
 0.46
 0.45
 0.44
 0.43
 0.42
 0.41
 0.40
 0.39
 0.38
 0.37
 0.36
 0.35
 0.34
 0.33
 0.32
 0.31
 0.30
 0.29
 0.28
 0.27
 0.26
 0.25
 0.24
 0.23
 0.22
 0.21
 0.20
 0.19
 0.18
 0.17
 0.16
 0.15
 0.14
 0.13
 0.12
 0.11
 0.10
 0.09
 0.08
 0.07
 0.06
 0.05
 0.04
 0.03
 0.02
 0.01
 0.00



PM
 USE11202.002
 DATE 20-3--0
 SF 400.136
 ST 135.0
 OL 6694.074
 SI 16384
 TD 16384
 SW 6410.256
 NZ/PI 7.78
 PW 5.0
 RD 1.000
 RQ 1.278
 RO 16
 RS 22
 TE 2835
 EV 8100.000
 OZ 4000.000
 OF 10L PD
 LB 0.0
 OB 0.0
 CK 0.0
 FI 0.0
 FZ 9.500PP
 NZ/CH 100.943
 PPH/CH 250
 SR 8373.88



3.044
3.026
3.009
2.991
2.813
2.795
2.777
2.760

5.801
5.775
5.758
5.733
5.246
5.242
5.203
5.178

7.610
7.597
7.377
7.374
7.368
7.355
7.352
7.341
7.337
7.319
7.315
7.311

exp1 pulse sequence: slath

```

SAMPLE      DEC. & VT
date      Mar 6 99  on
solvent   CDC13  dof
file      exp  dm
          nnn
ACQUISITION
sfrq     399.952  dm
tn       H1  opwr 30
          H1  opwr 30
at       1.365   PROCESSING
          16384  lb
          5999.7  ktfile
          3300   proc  ft
          4     fn   not used
          55   math
          7.0   pw
          1.000  werrf
          0     mexp
          1000  wds
          144  wnt
          n    DISPLAY
          not used  sp  -0.6
          gain      wd  3999.3
          flags    n  vs  B1
          in       n  sc  0
          dd       y  mc  400
          hs       nn  hzmm 0.23
          r1       15   179.89
          r1       3477.8
          r1p      2895.7
          th       10
          ins      100.000
          nm      cdc  ph
  
```

